



VCHUNG TECHNOLOGY CO. LTD

• Fiber Optic Cabling Interconnect •

VCHUNG Brief Introduction

VCHUNG Technology Co. Ltd was established in 2014, dedicated to providing customers with products and services of optical fiber communication devices with competitive value. VCHUNG Technology has been focusing on the development, manufacturing and sales for optical transceivers and MPO/MTP optical fiber cabling interconnected products.

VCHUNG products including 1G-10G/25G SFP28/ 40G/100G QSFP28/200G QSFP56Series transceivers, MPO/MTP cabling system, MPO/MTP cable, MPO/MTP loopbacks, Active Optical Cable (AOC) and so on.

VCHUNG service for IT solution connection, IDC data center construction, MPO high density cabling system, Optical transmission network, prove stable and reliable products and services.



VCHUNG Factory Base

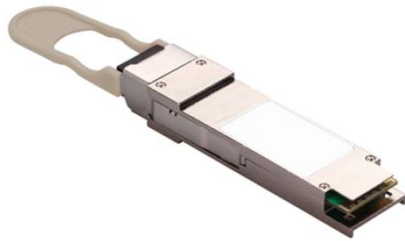
Fiber Optical Transceivers



100G CFP LR4/ER4



100G CFP2 LR4/ER4



40G/100G QSFP28 SR4



40G/100G QSFP28 LR4



40G/100G QSFP28 ER4



25G SFP28 ER



10G SFP+120KM



10G SFP+ CWDM & DWDM



1.25G / 10G COPPER



1.25G SFP BIDI



1.25G CSFP

Active Optical Cable (AOC) Series



100G QSFP28 AOC



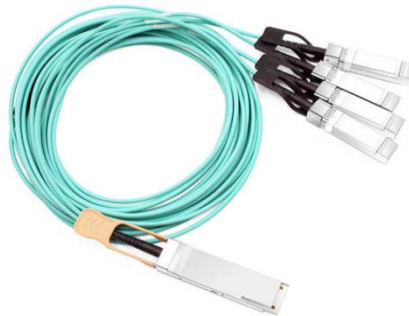
40G QSFP+ AOC



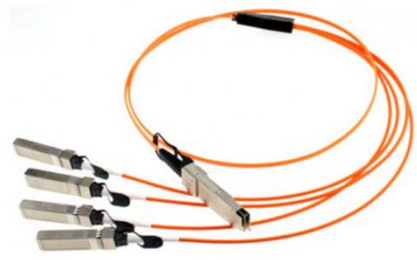
25G SFP28 AOC



10G SFP+ AOC



100G QSFP28 to 4SFP+ AOC



40G QSFP+ to 4SFP+ AOC



100G QSFP28 DAC



40G QSFP+ DAC



25G SFP28 DAC



100G to 4x25G DAC



40G to 10G DAC



10G SFP DAC

Product	Part Number	Data Rate (Gb/s)	Wavelength	Reach	LD	PD	TX Power (dBm) ¹	RX Power (dBm) ¹	Temp (°C)
QSFP28 SR4	VC-QP-8G100-01	100G	850nm	100m	VCS	PIN	-8.4~2.4	<-10.3	0~70
QSFP28 CWDM4	VC-QP-3G100-02	100G	CWDM	2km	DFB	PIN	-6.5~2.5	<-11.5	0~70
QSFP28 PSM4	VC-QP-3G100-02	100G	1310nm	2km	DFB	PIN	-5.5~2.0	<-10.2	0~70
QSFP28 LR4	VC-QP-3G100-10	100G	LWDM	10km	DFB	PIN	-4.3~4.5	<-10.6	0~70
QSFP28 ER4 Lite	VC-QP-3G100-30	100G	LWDM	40km	EML	APD	-2.9~+4.5	<-20.9	0~70
CFP2 LR4	VC-CFP2-LR4	100G	1310nm	10KM	DFB	PIN	-4.3~+4.5	<-10.6	0~70
CFP2 ER4	VC-CFP2-ER4	100G	1310nm	40KM	EML	PIN	-2.9~+2.9	<-20.9	0~70
CFP LR4	VC-CFP-LR4	100G	1310nm	10KM	DFB	PIN	-4.3~+4.5	<-10.6	0~70
CFP ER4	VC-CFP-ER4	100G	1310nm	40KM	EML	PIN	-2.9~+2.9	<-20.9	0~70
40G QSFP SR4	VC-QP-8G40-01	40G	850nm	100m	VCS	PIN	-7.6~1	<-11.1	0~70
40G QSFP CSR4	VC-QP-8G40-03	40G	850nm	300m	VCS	PIN	-7.5~0	<-9.9	0~70
40G QSFP SR-BD	VC-QP-8G40-BD	40G	832	300M/	VCS	PIN	-4~5	<-6	0~70
40G QSFP BD-RX	VC-QP-8G40-BD-RX	40G	832- 918nm	300M/	VCS	PIN	/	<-6	0~70
40G QSFPUNIV	VC-QP-3G40-UNIV	40G	CWDM	150M/500	DFB	PIN	-7~2.3	<-10	0~70
40G QSFP IR4	VC-QP-Q3G40-02	40G	CWDM	2KM	DFB	PIN	-7~2.3	-11.5	0~70
40G QSFP LR4	VC-QP-Q3G40-10-PSM	40G	CWDM	10KM	DFB	PIN	-6~-1	-14.4	0~70
40G QSFP LR4	VC-QP-Q3G40-10	40G	CWDM	10KM	DFB	PIN	-7~2.3	-11.5	0~70
40G QSFP ER4	VC-QP-Q3G40-40	40G	CWDM	40KM	DFB	APD	-2.7~+4.5	<-21.2	0~70
16G SFP+ SW	VC-SP-8G16-03	16G	850nm	300M	VCS	PIN	-7.8~-0.5	<-10.5	0~70
16G SFP+ LW	VC-SP-3G16-10	16G	1310nm	10KM	DFB	PIN	--5.0~-0.5	<-12.0	0~70
16G SFP+EW	VC-SP-3G16-40	16G	1550nm	40KM	EML	PIN	-1.0~+3.0	<-14.0	0~70
16G BIDI 20KM	VC-SPBD-23G16-20	16G	1270/1330	20KM	DFB	PIN	-1.0~+2.0	<-12.0	0~70
16G BIDI 20KM	VC-SPBD-32G16-20	16G	1330/1270	20KM	DFB	PIN	-1.0~+2.0	<-12.0	0~70
16G CWDM 40KM	VC-SP-CXXG16-40	16G	CWDM XXXnm	40KM	DFB	PIN	-1.0~+3.0	<-14.0	0~70
16G DWDM 40KM	VC-SP-DXXG16-40	16G	DWDM XXXnm	40KM	DFB	PIN	1.0~+3.0	<-14	0~70
SFP28	VC-SP-8G25-01	25G	850nm	100m	VCS	PIN	-5~2.4	<-10.3	0~70
	VC-SP-3G25-03	25G	1310nm	300m	DFB	PIN	-6~2.0	<-13.3	0~70
	VC-SP-3G25-10	25G	1310nm	10km	DFB	PIN	-2~4	<-14	0~70
SFP28 CWDM	VC-SP-CXXG25-10	25G	CWDM	10km	DFB	PIN	-7~2	<-13.3	0~70
SFP28 BIDI	VC-SPBD-23G25-10	25G	Tx1270/Rx1330	10km	DFB	PIN	-4.0~4.0	<-13.3	0~70
	VC-SPBD-32G25-10	25G	Tx330/Rx1270	10km	DFB	PIN	-4.0~4.0	<-13.3	0~70
32G SFP	VC-SP-8G32-01	32G	850nm	100m	VCS	PIN	-8.4~2.4	<-10.0	0~70
	VC-SP-3G32-10	32G	1310nm	10km	DFB	PIN	-7.0~2.0	<-11.6	0~70
SFP+	VC-SP-8G10-01	10G	850nm	300m	VCS	PIN	-6~-1	<-10	0~70
	VC-SP-3G10-02	10G	1310nm	2KM	FP	PIN	-6.5~-0.5	<-14.4	0~70
	VC-SP-3G10-022	10G	1310nm	220M	FP	PIN	-6.5~-0.5	<-10.0	0~70
	VC-SP-3G10-10	10G	1310nm	10km	DFB	PIN	-6~-0.5	<-14.4	0~70
	VC-SP-3G10-40	10G	1310nm	40KM	DFB	PIN	-1.0~3.0	<-16.0	0~70
	VC-SP-5G10-40	10G	1550nm	40km	EML	PIN	-1~3	<-15.8	0~70
	VC-SP-5G10-80	10G	1550nm	80km	EML	APD	0~4	<-2	0~70
	VC-SP-5G10-100	10G	1550nm	100KM	EML	APD	0~+4.0	<-25.0	0~70
	VC-XP-5G10-120	10G	1550nm	120KM	EML	APD	1.0~5.0	<-25.0	0~70
SFP+ BIDI	VC-SPBD-23G10-10	10G	1270/1330nm	10km	DFB	PIN	-6~-0.5	<-15	0~70
	VC-SPBD-32G10-10	10G	1330/1270nm	10km	DFB	PIN	-6~-0.5	<-15	0~70
	VC-SPBD-23G10-20	10G	1270/1330nm	20km	DFB	PIN	-3~3	<-15	0~70
	VC-SPBD-32G10-20	10G	1330/1270nm	20km	DFB	PIN	-3~3	<-15	0~70
	VC-SPBD-23G10-40	10G	1270/1330nm	40km	DFB	PIN	0~5	<-15	0~70
	VC-SPBD-32G10-40	10G	1330/1270nm	40km	DFB	PIN	0~5	<-15	0~70
	VC-SPBD-23G10-60	10G	1270/1330nm	60km	DFB	APD	0~5	<-20	0~70

Product	Part Number	Data Rate (Gb/s)	Wavelength	Reach	LD	PD	TX Power (dBm) ¹	RX Power	Temp (°C)
SFP+ BIDI	VC-SPBD-32G10-60	10G	1330/1270nm	60km	DFB	APD	0~5	<-20	0~70
	VC-SPBD-23G10-70	10G	1270/1330nm	70km	DFB	APD	3.0~7.0	<-22.0	0~70
	VC-SPBD-32G10-70	10G	1330/1270nm	70km	DFB	APD	3.0~7.0	<-22.0	0~70
	VC-SPBD-45G10-80	10G	1490/1550nm	80km	EML	APD	0~4.0	<-22.0	0~70
	VC-SPBD-54G10-80	10G	1550/1490nm	80km	EML	APD	0~4.0	<-22.0	0~70
	VC-SPBD-45G10-100	10G	1490/1550nm	100KM	EML	APD	0~4.0	<-22.0	0~70
	VC-SPBD-54G10-100	10G	1550/1490nm	100KM	EML	APD	0~4.0	<-22.0	0~70
SFP+ CWDM	VC-SP-CWXXG10-10	10G	1270-1450nm	10km	DFB	PIN	-6~-0.5	<-14.4	0~70
	VC-SP-CWXXG10-40	10G	1350-1390nm	40km	DFB	PIN	-1~3	<-15.8	0~70
	VC-SP-CWXXG10-40	10G	1470-1610nm	40km	EML	PIN	-1~3	<-15.8	0~70
	VC-SP-CWXXG10-80	10G	1470-1610nm	80km	EML	APD	0~4	<-23	0~70
	VC-SP-CWXXG10-100	10G	1470-1610nm	100km	EML	APD	1.0~4.0	<-26.0	0~70
	VC-SP-DWXXG10-40	10G	DWDM	40km	EML	PIN	-1~3	<-15.8	0~70
	AC-SP-DWXXG10-80	10G	DWDM	80km	EML	APD	0~4	-23~6	0~70
	VC-SP-DWXXG10-100	10G	DWDM	100KM	EML	APD	1.0~5.0	<-25.0	0~70
10G Copper SFP	VC-SFPG10-T	10G	N/A	100M	N/A	N/A	N/A	N/A	0~70
XFP	VC-XF-8G10-01	10G	850nm	300m	VCS	PIN	-6~1	<-10	0~70
	VC-XF-3G10-10	10G	1310nm	10km	DFB	PIN	-6~1	<-15	0~70
	VC-XF-3G10-022	10G	1310nm	220m	DFB	PIN	-6.5~-0.5	<-8.4	0~70
	VC-XF-3G10-40	10G	1310nm	40km	DFB	PIN	0~5	<-16	0~70
	VC-XF-5G10-40	10G	1550nm	40km	EML	PIN	-1~4	<-16.5	0~70
	VC-XF-5G10-80	10G	1550nm	80km	EML	APD	0~5	<-24	0~70
	VC-XF-5G10-100	10G	1550nm	100km	EML	APD	0~5	<-25	0~70
	VC-XF-5G10-120	10G	1550nm	120km	EML	APD	0~5	<-25	0~70
XFP BIDI	VC-XFBD-23G10-10	10G	1270/1330nm	10km	DFB	PIN	-5~0	<-15	0~70
	VC-XFBD-32G10-10	10G	1330/1270nm	10km	DFB	PIN	-5~0	<-15	0~70
	VC-XFBD-23G10-20	10G	1270/1330nm	20km	DFB	PIN	-3~2	<-15	0~70
	VC-XFBD-32G10-20	10G	1330/1270nm	20km	DFB	PIN	-3~2	<-15	0~70
	VC-XFBD-23G10-40	10G	1270/1330nm	40km	DFB	PIN	0~5	<-15	0~70
	VC-XFBD-32G10-40	10G	1330/1270nm	40km	DFB	PIN	0~5	<-15	0~70
	VC-XFBD-23G10-60	10G	1270/1330nm	60km	DFB	APD	0~5	<-20	0~70
	VC-XFBD-32G10-60	10G	1330/1270nm	60km	DFB	APD	0~5	<-20	0~70
	VC-XFBD-23G10-70	10G	1270/1330nm	70km	DFB	PIN	1.0~6.0	<-20.0	0~70
	VC-XFBD-32G10-70	10G	1330/1270nm	70km	DFB	PIN	1.0~6.0	<-20.0	0~70
	VC-XFBD-45G10-80	10G	1490/1550nm	80km	DFB	EML	0~4.0	<-20.0	0~70
	VC-XFBD-54G10-80	10G	1550/1490nm	80km	DFB	EML	0~4.0	<-20.0	0~70
XFP DWDM	VC-XF-CWXXG10-20	10G	1270-1330nm	20km	DFB	PIN	-1~4	<-16	0~70
	VC-XF-CWXXG10-40	10G	1470-1610nm	40km	EML	PIN	-1~4	<-16	0~70
	VC-XF-CWXXG10-80	10G	1470-1610nm	80km	EML	APD	0~5	<-24	0~70
	VC-XF-DWXXG10-40	10G	DWDM	40km	EML	PIN	-1~4	<-16	0~70
	VC-XF-DWXXG10-80	10G	DWDM	80km	EML	APD	0~5	<-24	0~70
3G Video SFP	VC-SF-3G3-20	3G	1310nm	20km	DFB	PIN	-5~0	-3~18	0~70
	VC-SF-3G3-40	3G	1310nm	40km	DFB	PIN	-1~3	-3~19	0~70
	VC-SFBD-35G3-20	3G	1310/1550nm	20km	DFB	PIN	-5~0	-3~18	0~70
	VC-SFBD-53G3-20	3G	1550/1310nm	20km	DFB	PIN	-5~0	-3~18	0~70
SFP	VC-SF-8G1-01	1.25G	850nm	550m	VCS	PIN	-9.5~0	<-21	0~70
	VC-SF-3G1-10	1.25G	1310nm	10km	FP	PIN	-10~0	<-25	0~70
	VC-SF-3G1-20	1.25G	1310nm	20km	FP	PIN	-9~0	<-25	0~70
	VC-SF-3G1-40	1.25G	1310nm	40km	DFB	PIN	-5~0	<-21	0~70

Product	Part Number	Data Rate (Gb/s)	Wavelength	Reach	LD	PD	TX Power (dBm) ¹	RX Power	Temp (°C)
SFP	VC-SF-5G1-40	1.25G	1550nm	40km	DFB	PIN	-7~0	<-25	0~70
	VC SF-5G1-60	1.25G	1550nm	60km	DFB	PIN	0~5	<-26	0~70
	VC-SF-5G1-80	1.25G	1550nm	80km	DFB	PIN	-3~3	<-26	0~70
	VC SF-5G1-100	1.25G	1550nm	100km	DFB	PIN	1~5	<-31	0~70
	VC-SF-5G1-120	1.25G	1550nm	120km	DFB	APD	1~5	<-32	0~70
	VC-SF-5G1-160	1.25G	1550nm	160km	DFB	APD	1~5	<-36.0	0~70
SFP BIDI	VC-SFBD-35G1-10	1.25G	1310/1550nm	10km	FP	PIN	-10~3	<-25	0~70
	VC-SFBD-53G1-10	1.25G	1550/1330nm	10km	FP	PIN	-10~-3	<-25	0~70
	VC-SFBD-35G1-20	1.25G	1310/1550nm	20km	FP/D	PIN	-9~-3	<-25	0~70
	VC-SFBD-53G1-20	1.25G	1550/1330nm	20km	FP/D	PIN	-9~-3	<-25	0~70
	VC-SFBD-35G1-40	1.25G	1310/1550nm	40km	DFB	PIN	-4~3	<-25	0~70
	VC-SFBD-53G1-40	1.25G	1550/1310nm	40km	DFB	PIN	-4~3	<-25	0~70
	VC-SFBD-45G1-80	1.25G	1490/1550nm	80km	DFB	PIN	-3~3	<-26	0~70
	VC SFBD-54G1-80	1.25G	1550/1490nm	80km	DFB	PIN	-3~3	<-26	0~70
	VC-SFBD-45G1-120	1.25G	1490/1550nm	120km	DFB	APD	0~+5.0	<-32.0	0~70
	VC SFBD-54G1-120	1.25G	1550/1490nm	120km	DFB	APD	0~+5.0	<-32.0	0~70
SFP CWDM	VC-SF-CWXXG1-40	1.25G	1270-1610nm	40km	DFB	PIN	-4~30	<-25	0~70
	VC-SF-CWXXG1-80	1.25G	1270-1610nm	80km	DFB	PIN	-3~3	<-26	0~70
	VC-SF-CWXXG1-120	1.25G	1270-1610nm	120km	DFB	APD	0~5	<-34	0~70
	VC-SF-DWXXG1-160	1.25G	1270-1610nm	160kkm	DFB	APD	1~5	<-36.0	0~70
	VC-SF-DWXXG1-40	1.25G	1530.33-1561.4	40KM	DFB	PIN	0~5	<-24.0	0~70
	VC-SF-DWXXG1-80	1.25G	1530.33-1561.4	80KM	DFB	PIN	0~5	<-24.0	0~70
	VC-SF-DWXXG1-120	1.25G	1530.33-1561.4	120KM	DFB	APD	0~5	<-30.0	0~70
Copper SFP	VC-SFP-T	1000BASE-T	N/A	100M	N/A	N/A	N/A	N/A	0~70
	VC-SFP-TE	10/100/1	N/A	100M	N/A	N/A	N/A	N/A	0~70
CSFP	VC-CSFBD-35G1-20	1.25G	1310/1550	20KM	DFB	PIN	-9.0~-3.0	<-20.0	0~70
	VC-CSFBD-53G1-20	1.25G	1550/1310	20KM	DFB	PIN	-9.0~-3.0	<-20.0	0~70
	VC-CSFBD-34G1-20	1.25G	1310/1490	20KM	DFB	PIN	-9.0~-3.0	<-20.0	0~70
	VC-CSFBD-43G1-20	1.25G	1490/1310	20KM	DFB	PIN	-9.0~-3.0	<-20.0	0~70
EPON OLT	VC-EPON-OLC-01	1.244Gbit/	Tx1490nm	20KM	DFB	PIN	0~+4.0	<-27.0	0~70
	VC-EPON-OLC-02	1.244Gbit/	Tx1490nm	20KM	DFB	PIN	0~+4.0	<-27.0	0~70
GPON OLT	VC-GPON-OLT-B+	2.488	Tx1490nm	20KM	DFB	APD	+1.5~+5.0	<-28.0	0~70
	VC-GPON-OLT-C+	2.488	Tx1490nm	20KM	DFB	APD	+3.0~+7.0	<-30.0	0~70
	VC-GPON-OLT-C++	2.488	Tx1490nm	20KM	DFB	APD	+4.5~+10.0	<-31.0	0~70
QSFP28+AOC	VC-QP28-QP28-AOC-xx	100G	850nm	1~100m	VCS	PIN	N/A	N/A	0~70
QSFP28 to xSFP28	VC-QP28-4xSFP28-VOC	100G	850nm	1~100m	VCS	PIN	N/A	N/A	0~70
QSFP+AOC	VC-QP-QP-AOC-xxm	40G	850nm	1~100m	VCS	PIN	N/A	N/A	0~70
QSFP to 4XSFP+	VC-QP-4xSFP-AOC-xxm	40G	850nm	1~100m	VCS	PIN	N/A	N/A	0~70
SFP28 AOC	VC-SFP28-SFP28-AOC-x	25G	850nm	1~100m	VCS	PIN	N/A	N/A	0~70
SFP+AOC	VC-SFP+-SFP+-AOC-xx	10G	850nm	1~300m	VCS	PIN	N/A	N/A	0~70
QSFP28 DAC	VC-QP28-QP28-DAC-xx	100G	24/26/30 AWG	1~5m	N/A	N/A	N/A	N/A	0~70
QSFP28 to xSFP28	VC-QP28-4xSFP28-DAC	100G	24/26/30 AWG	1~5m	N/A	N/A	N/A	N/A	0~70
QSFP+DAC	VC-QP-QP-DAC-xxm	40G	24/26/30 AWG	1~7m	N/A	N/A	N/A	N/A	0~70
QSFP+ to 4xSFP+	VC-QP-4xSFP+-DAC-xx	40G	24/26/30 AWG	1~7m	N/A	N/A	N/A	N/A	0~70
SFP28 DAC	VC-SFP28-SFP28-DAC-x	25G	26/30 AWG	1~5m	N/A	N/A	N/A	N/A	0~70
SFP+DAC	VC-SFP+-SFP+-DAC-xx	10G	24/26/30 AWG	1~10m	N/A	N/A	N/A	N/A	0~70

Fiber Optical Cable MPO Connector Pre-terminated



OM3 MPO Cable



OM4 MPO Cable



Single-mode MPO Cable



OM3 MPO to LC Cable



OM4 MPO to LC Cable



Single-mode MPO to LC Cable



MPO to LC-HD Connector



MPO to LC Uniboot Connector



MPO to LC Cable 24-Core



OM3 MPO Cable 96-Core



OM3 MPO Cable 96-Core
with pulling eye kits



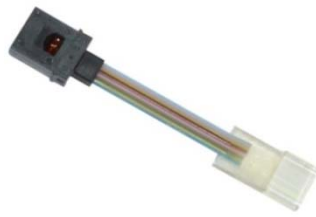
OM3 MPO to LC Cable 96-Core

Item	Optional Type
Connector Type	MPO, MTP, LC
MPO Connector(Core)	12, 24, 16, 32
LC Connector(2.0mm Loose Tube)	LC-HD, Uniboot, Duplex, Simplex
Fiber Type and Cable Color	Single-mode(G.657A1): Yellow,
Cable Core	4, 6, 8, 12, 24, 16, 32 Cores and Outer diameter=3.0mm
Cable Material	LSZH, Plenum(OFNP) or customized
Insertion Loss	MPO: Low Loss-IL≤0.35dB, Standard Loss-IL≤0.70dB
Return Loss	MPO: SM/RL≥55dB, MM/RL≥25dB

Fiber Optical Cable MT Ferrule Pre-terminated



MT to MT Jumper



MT to FA Jumper



MT with LC Ferrule to FA Jumper

Item	Optional Type
Connector Type	MPO, MTP, LC
MPO Connector(Core)	12, 16
Fiber Type	Single-mode(G.657A1), Multimode: OM4, OM3, Ribbon Fiber
Cable Core	4, 6, 8, 12, 16 Cores
Insertion Loss	MPO: Low Loss-IL≤0.35dB, Standard Loss-IL≤0.70dB
Return Loss	MPO: SM/RL≥55dB, MM/RL≥25dB

Fiber Optical Cable LC/SC/FC/ST Connector Pre-terminated



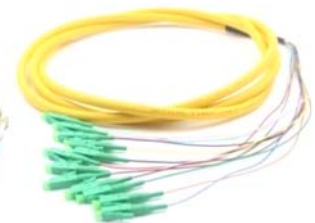
Waterproof Multifiber



Photoelectric Hybrid Cable



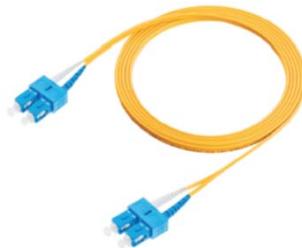
Multifiber Patchcord



12cores LC Pigtail



LC to LC Duplex



SC to SC Duplex



LC to FC Duplex



LC to SC Simplex

Item	Optional Type
Connector Type	LC, SC, FC, ST, Simplex or Duplex
Connector(Core)	Ceramic Ferrule
Fiber Type	Single-mode, Multimode: OM4, OM3, OM2,OM1
Insertion Loss	LC: IL≤0.30dB(Typical=0.20dB)
Return Loss	LC: SM/APC/RL≥60dB, SM/UPC/RL≥50dB, MM/RL≥30dB

Fiber Optical Cable Loopback Patch-cord



MPO Loopback

Mini LC Loopback

Item	Optional Type
Connector Type	MPO, MTP, LC
MPO Connector(Core)	12, 16, 24
Fiber Type	Single-mode(G.657A2), Multimode: OM4, OM3
MPO Loopback Type	Type A, Type B, Type C
Insertion Loss	MPO: Low Loss-IL≤0.70dB, Standard Loss-IL≤1.00dB

Fiber Optical Attenuators (Plug Type Fixed)



FC Attenuator

SC Attenuator

LC Attenuator

Item	Optional Type
Attenuator Type	FC, SC, LC, APC or UPC
Fiber Type	Single-mode
Attenuator Value	1 to 30dB
Attenuation Tolerance	Attenuator Value ≤5dB, ±0.5dB
Return Loss	LC: SM/APC/RL≥60dB, SM/UPC/RL≥50dB

Fiber Optical Passive Multiplexers



ITEM		DWDM				CDWM					
		4 Channel		8 Channel		4 Channel		8 Channel		16 Channel	
Parameter		Add	Drop	Add	Drop	Mux	Demux	Mux	Demux	Mux	Demux
		Channel	Wavelength (nm)	ITU Grid				1270~1610			
Center	wavelength Accuracy (nm)	±0.05 (100G) / ±0.1 (200G)				±0.5					
Channel	Spacing	100(GHz)				20(nm)					
Channel	Pass band (@-0.5dB bandwidth (nm)	>0.22 (100G) / >0.5(200G)				>13					
Insertion Loss (dB)	In—Drop@drop	2.0		3.2		≤1.6	≤2.5	≤4.5			
	Add--Out@add	2.0		3.2							
	In--out@other	2.5		5.0							
Add/Drop Channel Ripple (dB)		<0.3				<0.3					
Isolation @Add/Drop Channel	Adjacent	N/A	>30	N/A	>30	N/A	>30	N/A	>30	N/A	>30
	Non-adjacent	N/A	>40	N/A	>40	N/A	>40	N/A	>40	N/A	>40
Insertion Loss Temperature Sensitivity (dB/°C)		<0.005				<0.005					
Wavelength Temperature Shifting (nm/°C)		<0.002				<0.002					
Polarization Dependent Loss (dB)		<0.1				<0.1					
Polarization Mode Dispersion (ps)		<0.1				<0.1					
Directivity (dB) (Input to add, Output to drop, add to)		>50				>50					
Return Loss (dB)		>45				>45					
Maximum Power Handling (mW)		500				300					
Operating Temperature (°C)		-10~+75				-10~+75					
Storage Temperature (°C)		-40~+85				-40~+85					

Rack and Cassette Series



For More Information, Please Contact Us or Meet Our Website.



Contact us

Shenzhen Office:

Add: Room 201, Block A, No.1, Qianhai Road 1, Qianhaishen Port Cooperative District, Shenzhen, Guangdong, China
Zip Code: 51800

Tel: +86 755-81481899

Fax: +86 755-81481889

E-Mail: sales@vchung.com

Skype / We Chat: gamvinhuang

Hong Kong Office:

Add: Unit 506, Beverley Commercial Centre 87-105 Chatham Road South Tsim Sha Tsui, Kowloon, Hong Kong
Zip Code: 999077

Tel : 00852-30697090

Fax : 00852-35904728

E-Mail : gavin.huang@vchung.com

Website : <http://www.vchung.com>